

# The PlainID Identity Security Posture Management Platform



Enhance Identity Security for your enterprise with Visibility, Policy Management, and Authorization

## Changing Paradigms in Cybersecurity & Identity

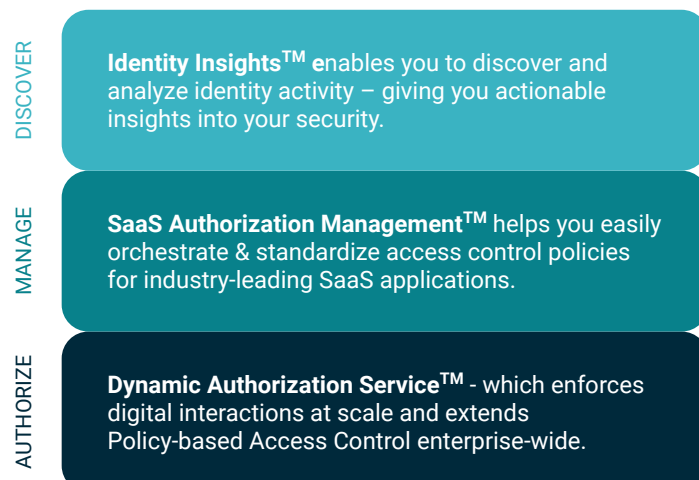
The cybersecurity landscape has evolved, shifting from traditional perimeter defenses to an identity-centric security model. This approach pivots on securing the various identities within an organization—employees, B2B partners, customers, systems—each a potential vector to sensitive data and resources.

Statistics show a trend: four out of the five largest breaches were due to unauthorized access. In 2022 alone, 70% of disclosed data breaches stemmed from unauthorized access, with the percentage only expected to climb.

Identities have become akin to master keys, unlocking access across applications, APIs, microservices, and data platforms, making them focal targets for malicious actors. The rise in unauthorized access as a common entry point for high-profile breaches underpins the need for stringent Identity Security measures.

## Introducing the PlainID Identity Security Posture Management Platform

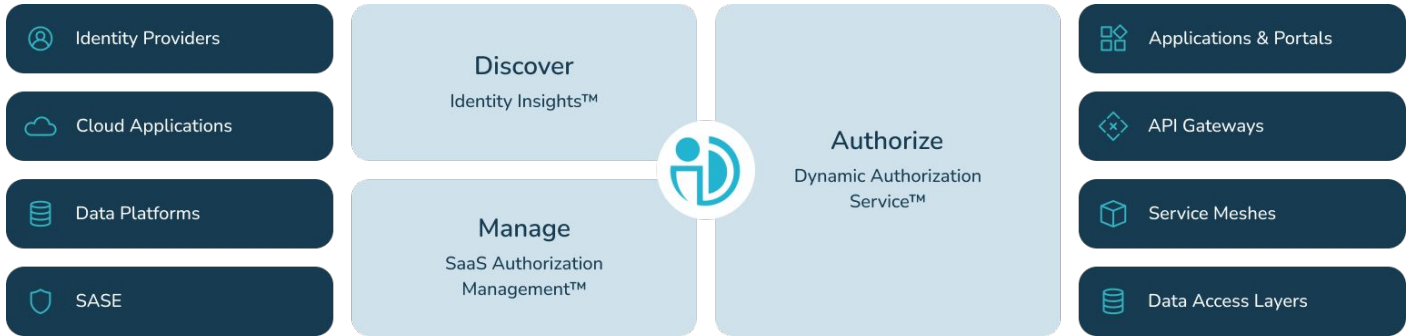
The **PlainID Identity Security Posture Management Platform** (ISPM) enables you to discover, manage, and authorize digital interactions to help you achieve identity security and least privilege access across SaaS apps, APIs, microservices, and data. The platform consists of three modules:



## Platform Benefits

- Visibility & Monitoring**  
Gain full visibility into your identity landscape and continuous monitoring of digital interactions, ensuring secure and compliant access across your organization.
- Automated & Streamlined**  
Automate policy management processes with PlainID, streamlining access controls and policy enforcement for improved efficiency and security posture.
- Standardization & Consistency**  
Ensure consistent application of access policies across all digital assets, achieving a standardized security approach that reduces gaps and vulnerabilities.
- Compliance & Governance**  
Meet evolving compliance standards and auditing requirements with comprehensive policy management tools that simplify audits and reporting.
- Risk Management**  
Proactively manage and mitigate identity-related risks with dynamic, context-aware policies that adjust to evolving threats and security landscapes.

# The PlainID Identity Security Posture Management Platform



To more effectively prevent identity-related threats, enterprises rely on PlainID as part of their security strategies to fortify their digital environments against unauthorized access and potential breaches. PlainID supports enterprise initiatives that address:

- **Identity Hygiene:** Gain full visibility into identity activity and existing access controls. PlainID monitors and alerts misaligned privileges with user roles to prevent unauthorized access and data breaches. Powered by advanced AI, PlainID analyzes identity activity and provides actionable steps and recommendations.
- **Least Privilege Access:** PlainID helps you maintain minimal access as necessary for their roles (e.g. organizational, customer, etc.), minimizing breach risks, and ensuring regulatory compliance. This strategy limits access to sensitive information, reducing the potential for security incidents.
- **Zero Trust:** PlainID applies continuous, contextual access decisions at every layer in the technology stack. This helps enterprises maintain real-time, adaptive access controls based on identity context (e.g., location, risk score, device health, and more).

## Future-proof Your Enterprise

The **PlainID Integration Hub** is designed to address the complex challenges of enterprise access control. By offering out-of-the-box Authorizers™ and Integrations, it allows for a standardized approach across varied and distributed infrastructures – unifying disparate access controls under one platform.

### ABOUT PLAINID

PlainID is The Identity Security Company™. We help identity-centric enterprises defend themselves from adversaries who use identity-based attacks. Our Identity Security Posture Management Platform provides Identity Insights, SaaS Authorization Management, and Dynamic Authorization Services to create identity-centric security across SaaS, APIs, microservices, apps, and data powered by policy-based access control. Visit [PlainID.com](https://PlainID.com) for more information.

